

NOT MY ENEMY

ENEWA
WA
NOL

HOW DO WE FIGHT THE WAR WE INHERIT?

SISTERS UNITE PRODUCTIONS PRESENTS "NOT MY ENEMY" STARRING KEHINDE ISHANGI, LARRY L. DAVIS,
GEORGE HARDY, JOHN O. PERPENER, WASHINGTON SANCHEZ, AND CHRISTAL BROWN

MUSIC BY FARAI MALIANGA EDITED BY TIFFANY RHYNARD DIRECTOR OF PHOTOGRAPHY TIFFANY RHYNARD

PRODUCED BY KEHINDE ISHANGI & TIFFANY RHYNARD DIRECTED BY KEHINDE ISHANGI





SYNOPSIS

Looking backward to move forward, Kehinde Ishangi, an African American choreographer, searches to uncover the truth about her absent father's choices and reveals the real enemy of the Vietnam War.

In the feature documentary, *Not My Enemy*, director Kehinde Ishangi paints a picture of the traumatic and dehumanizing impact of the Vietnam War through the experiences of African-American soldiers. Weaving between a fictional narrative and real-life interviews with Vietnam veterans, the documentary dance film becomes a harrowing reminder of how an aimless and violent war left indelible scars on a generation of Black men and their families. Those who made it out of Vietnam returned home only to find another war raging in their backyard, the battle for civil rights. Inspired by dialogue with her father, a Vietnam veteran, Ishangi examines the nightmare of combat, the deeply psychological aftermath, and the effort to heal from these lifelong wounds.



**SISTERS UNITE
PRODUCTIONS**

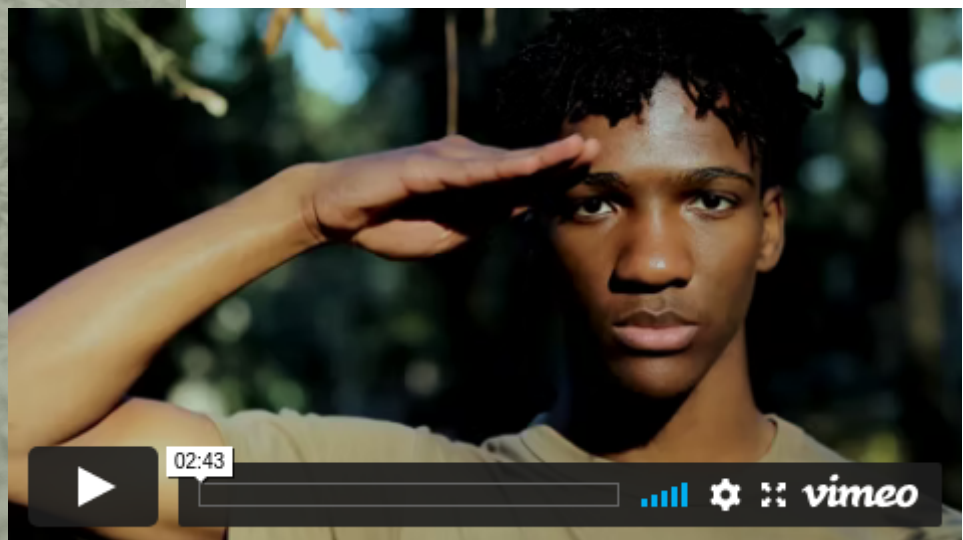
TRAILER

the wars we inherit



VIEW ON YOUTUBE

[HTTPS://WWW.YOUTUBE.COM/WATCH?V=AFKVWoe-yfw&feature=youtu.be](https://www.youtube.com/watch?v=AFKVWoe-yfw&feature=youtu.be)



VIEW ON VIMEO

[HTTPS://VIMEO.COM/440533977](https://vimeo.com/440533977)

NOT MY ENEMY



COMMUNITY ENGAGEMENT

Not My Enemy is more than a film, it is a community engagement initiative. News reports confirm that veterans still struggle to receive proper aid post war. Combat and wartime experiences have silently destroyed the countries most valued citizens - those who have given, or have risked, their life for their country. According to the National Council for Behavioral Health, less than 50 percent of veterans in need receive mental health treatment and reportedly the Veterans Administration reports that approximately 22 veterans commit suicide every day. These are startling statistics and speak to the need to break the taboo surrounding the impact of combat and wartime trauma.

Not My Enemy highlights the stories of African-American men, the socio-political climate during the Vietnam War, and how the complexities of race intersect with veteran's mental health. Although Vietnam took place decades ago, there are clear parallels to be made with racial tensions in the country now.

News reports confirm that veterans still struggle to receive proper aid post war.

Not My Enemy seeks to increase veteran support on a large scale. We hope to leverage the power of film to impact legislative change around veteran mental health.

NOT MY ENEMY

CAST & CREW

Director: Kehinde Ishangi

Producers: Kehinde Ishangi and Tiffany Rhynard

Choreographer: Kehinde Ishangi

Cinematographer: Tiffany Rhynard

Composer: Farai Malianga

Cast: Ayah and Azariah, Ahmad Ratliff-Brown, Larry Davis, Joseph McDonald,
Ramone Nelson, Washington Sanchez, Baba Segun, Aaron Smith, Josh White

Collaboratively filmed with Ebone Amos, Garie A. Anderson Jr., Melissa Cobblah,
Aaron Ellis, Francisco Graciano, Imranda Ward, Christa Williams.

Editor: Tiffany Rhynard



**SISTERS UNITE
PRODUCTIONS**



Photo by @franciscograciano

CREATIVE TEAM

KEHINDE ISHANGI

director, producer, choreographer



Kehinde Ishangi is a dance artist, educator, and scholar. She is an Assistant Professor in Studio Practices and Dance Science at Florida State University. Ishangi holds a Master of Fine Arts in Dance from Florida State University, where she was a University Fellow. She earned a Bachelor of Arts cum laude in Dance Pedagogy from Brenau University. Ishangi is a Level 3 Franklin Method® Educator, certified GYROTONIC®, GYROKINESIS®, STOTT PILATES™, and CoreAlign® Instructor. She is the director of The Ishangi Institute created to further her research and application of movement science.

Ishangi has been an international dance soloist. Within The United States, she has performed with such companies as Ballethnic Dance Company, Cleo Parker Robinson Dance Ensemble, and KM Dance Project. While residing in Paris, France, Ishangi was a performing artist with Compagnie James Carlès and Compagnie Georges Momboye. She has danced the repertoire of Martha Graham, Alwin Nikolais, Ronald K. Brown, Donald McKayle, Jawole Zollar, Milton Myers, Irène Tassebèdo, David Roussève, and Katherine Dunham. Most recently, Ishangi performed Boschimanne: living curiosities with KM Dance Project at the 2019 National Performance Network conference and Ancestors at the 2020 Festival International de Danse de Ouagadougou in Burkina Faso, West Africa.

Ishangi has taught at international dance conservatories and universities, including a Visiting Professorship at Tulane University, USA. In addition to these appointments, she served for three years on the faculty of L'Académie Américaine de Danse de Paris in France. Ishangi has used her training as a Movement Scientist during the collaboration of Les écaillés de la mémoire performed by Jawole Zollar's Urban Bush Women from the United States, and Germaine Acogny's Jant-Bi of Senegal, West Africa. Ishangi's pedagogical approach aims to integrate functional anatomy within studio practices.

CREATIVE TEAM

FARAI MALIANGA

composer



Farai Malianga, born and raised in Zimbabwe, began his career in African Dance in Colorado with Leticia Williams' Harambee and Musical Director Judy "Fatu" Henderson. Upon arriving in New York he began studying dance and drum with pioneers Yousof Koumbasa, Mbemba Bangoura and Ronald K. Brown. Performing with the Masters: Chuck Davis in BAMs Dance Africa', Reginald Yates with the Alvin Ailey American Dance Theatre, Heritage O.P. Performing with Dance Companies: Harambee, Umoja, The New Jersey Chamber Orchestra, Obediah Wrights Balance, BSRC, Def Dance Jam, Juxtapower and Opus. Performing with Musicians: Roy Ayers, Wunmi Olaiya., Manchild Black, Akua Allrich, Melanie Charles, Scott Patterson, Saycon Sengbloh, Amma Whatt!, Nomsa Mazwai and Nakia Henry.

Working in Theatre: Off Broadway production of "Darker Faces of the Earth" and on the Broadway Stage in the musical "Fela!" Working in Film: International Domestic Violence Series produced by Joe Rodman and Kasi Lemmon's film "Black Nativity."

Malianga's composition credits include commissioned works for Camille Brown, Karen Loves' Umoja, Christal Browns' Inspirit Dance Company and "Jenaguru" An African Creation Myth for the Smithsonian. As a videographer he produced and directed Wunmi Olaiya's music video "Fit Body," the documentary piece "Kalakuta Broadway!" (During his time in "Fela,"), Summit Academy Charter School in Red Hook (tracking the affects and recovery of a school impacted by hurricane Sandy) for the Play "Hush Hush" by Aquaila Barnes based on the book of the same name by DeShannon Bowens and for 651 Arts for their workshop series "Home in Time of Brooklyn." Malianga has also worked as both Sound and Video Designer for "The Power of the Unknown," a collaborative project under the direction of Dr Darian Parker and Daaimah Taalib-Din.

CREATIVE TEAM

TIFFANY RHYNARD

producer, editor



FILMS:

Black Stains

Invisible Queens

Little House in the Big House

Forbidden: Undocumented and Queer in Rural America

Tiffany Rhynard is an award winning filmmaker and dancer making work that examines social justice issues. Rhynard's award winning documentary, *Forbidden: Undocumented and Queer in Rural America*, received a 2018 Television Academy Honor for its airing on LogoTV in partnership by the American Civil Liberties Union (ACLU). *Forbidden* was awarded the first Social Justice Film Award from the Southern Poverty Law Center, received the Freedom Award from Outfest, was featured on American Airlines during their 2017 Pride campaign, and is now currently streaming on Amazon Prime Video.

Rhynard's dance films have screened at festivals nationwide including ScreenDance Miami where she was awarded the Jury Prize for *Invisible Queens* (2015) and for *Black Stains* (2018). A cross-disciplinary artist, she has worked with esteemed collaborators including choreographer Christal Brown, internationally renowned composer Lei Liang, real-time digital media artist Marlon Barrios Solano, and mezzo-soprano Sahoko Sato Timpone. Rhynard holds a B.A. in Dance from UNC Greensboro where she was honored in 2018 with a Distinguished Alumni Award. She received her M.F.A. in Choreography from The Ohio State University. She has taught at colleges and universities throughout the country and is currently Assistant Professor in the FSU School of Dance where she teaches Contemporary Technique, The Body and Social Justice, and Dance and Technology.

NOT MY ENEMY



CONTACT US!

If you are interested in screening Not My Enemy and holding a discussion around these issues, contact us today:

sistersuniteproductions06@gmail.com



Please visit the Sisters Unite Productions website to view more films that humanize critical social justice issues.

www.sistersunitepro.com